

Creating a Dante Network

Bernie Farkus
Sr. Technical Sales Engineer
Audinate

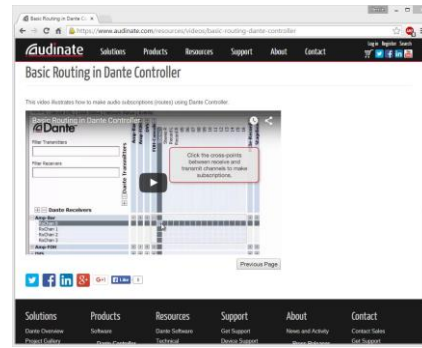


In this session we will be covering:

- The hardware and software required to create a Dante network.
 - The “Rules of Engagement” regarding the Dante gear on your tables.
- Dante Controller Basics
 - Connecting to a Dante system
 - Overview of the Menu Bar, Tool Bar, Status Bar, Tabs, & Device View
 - Routing of audio.
- Using Dante Virtual Soundcard
 - DVS settings and usage.

- For additional resources regarding Dante networking and creating Dante networks, please visit:

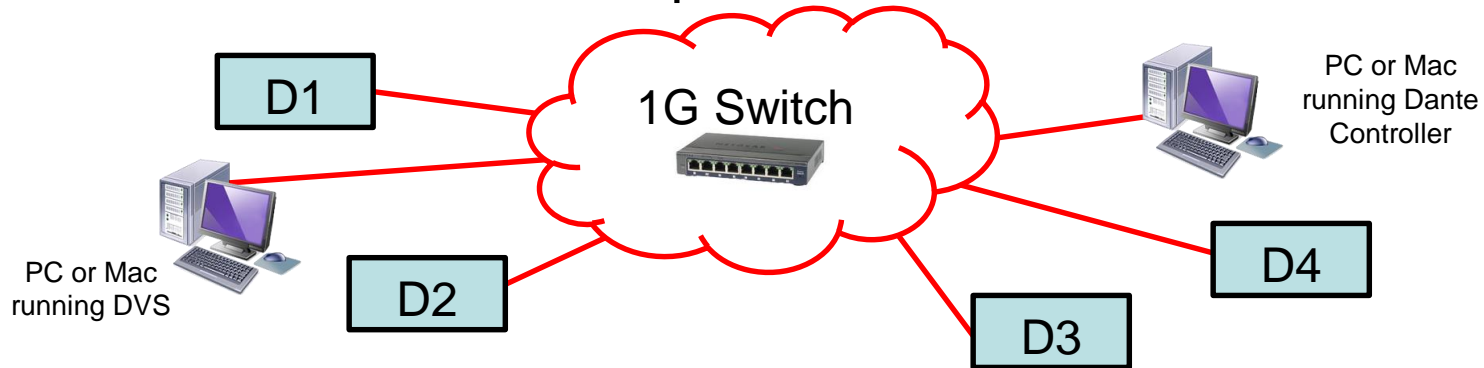
<https://www.audinate.com/resources/training-and-tutorials>



Creating a Dante Network

What is required for a Dante Audio Network?

- Two or more Dante enabled audio devices connected via a Gigabit Ethernet network.
 - With all devices that are connecting audio streams being set to the same sample rate.



Creating a Dante Network

You can also connect two Dante enabled device directly together.

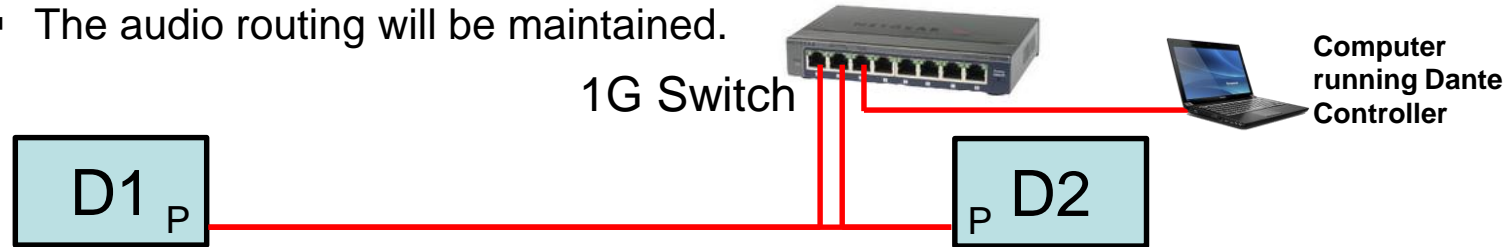
- This depends on the network set-up capabilities for the devices to be connected.
 - It requires one of the devices to have Primary and Secondary connections.
 - And be configured to operate in switched mode.



Creating a Dante Network

If you have devices that only have a Primary connector:

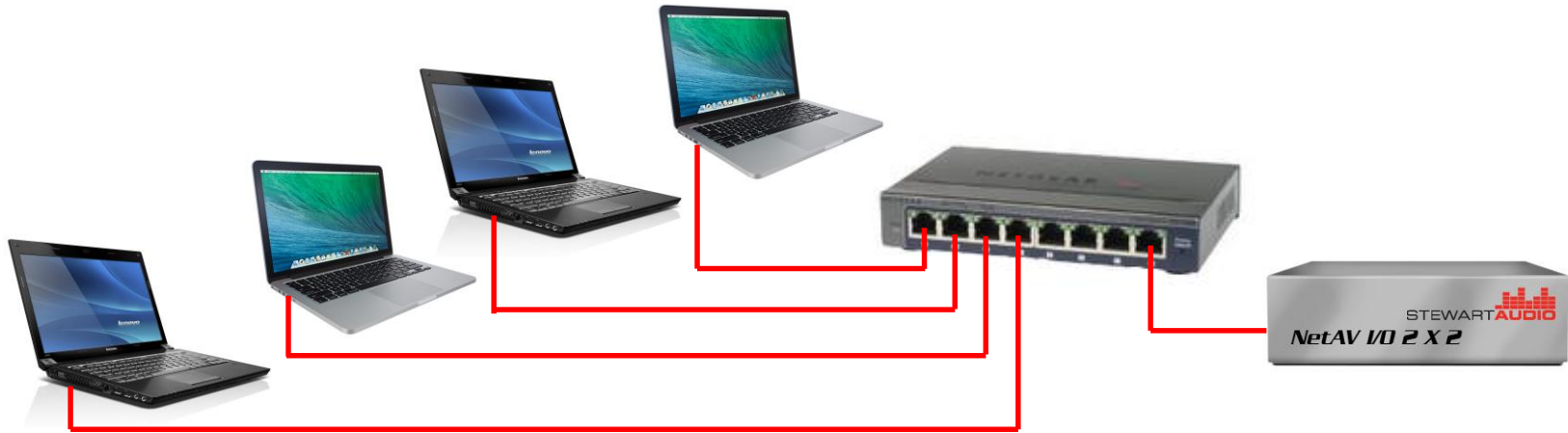
- Use a switch and a computer running Dante Controller for network configuration.
- Make your audio routes.
- Once set up is complete
 - Remove the switch and computer from the system.
 - Connect the two devices point-to-point.
 - The audio routing will be maintained.



Creating a Dante Network

On each table you will find:

- An eight-port gigabit Ethernet switch
- A Dante enabled product connected to the switch.
- Enough CAT-5e cables to be used for connecting your computers to the Dante network.



Rules of Engagement

Things to Remember:

- Each table will be it's own independent Dante network.
- At least one computer on each network must have DVS running.
- You will have Dante Controller open and be connected to the network.

Rules of Engagement

Remember the when multiple instances of Dante Controller are open on a network:

- The changes made on your computer will be reflected on all computers.
 - So play nice with each other.
 - Work as a team
 - Especially when configuring Dante Devices

Rules of Engagement

Troubleshooting:

- If you have a connection issue:
 - Make sure that your Wi-Fi is disabled
 - Your wired Ethernet port is set to DHCP.
 - Or simply raise your hand and Audinate employees will be happy to assist you.





 **ASHLY**  **ATTEROTECH**  **audinate**  **audio-technica.**  **BOSE**  **ClearOne.**  **Extron.**  **Focusrite**
REDNET

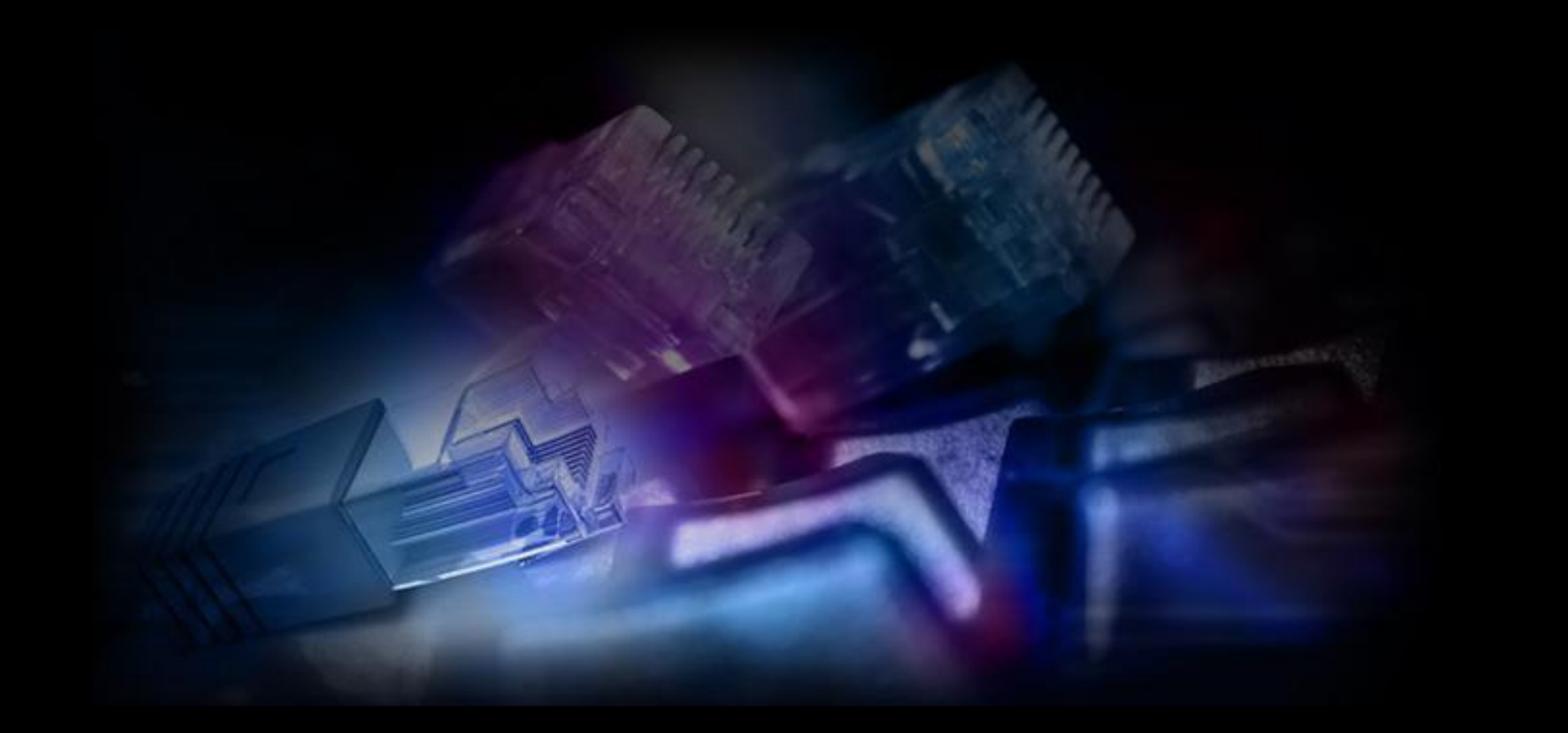
 **LECTROSONICS**  **RDL**  **SHURE**  **Solid State Logic**
SOUND || VISION  **STEWART AUDIO**  **Symetrix**  **VUE**
audiotechnik  **YAMAHA**  **CO**
COMM-MUSIC

 **Dante**
AV NETWORKING WORLD

Creating a Dante Network

In this session we will be covering:

- Configuring Dante devices using Device View
 - Dante Clock Settings
 - Latency Settings
 - Dante Flows (unicast & multicast)
- Diagnostic Tools in Dante Controller
- Creating and Recalling Dante Presets
- Q & A



 **ASHLY**  **ATTEROTECH**  **audinate**  **audio-technica.**  **BOSE**  **ClearOne.**  **Extron.**  **Focusrite**
REDNET

 **LECTROSONICS**  **RDL**  **SHURE**  **Solid State Logic**
SOUND || VISION  **STEWART AUDIO**  **Symetrix**  **VUE**
audiotechnik  **YAMAHA**  **CO**
COMM-MUSIC



Dante
AV NETWORKING WORLD

Thank You!

